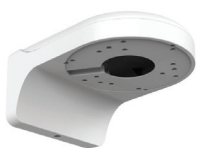




FEATURES

- 8MP, 1/3" CMOS image sensor, low illuminance, high image definition
- Outputs (3840 × 2160)@20 fps
- H.265 codec, high compression rate, low bit rate
- Built-in IR LED, max. IR distance: 40 m
- ROI, SMART H.264+/H.265+, flexible coding, applicable to various bandwidth and storage environments
- Rotation mode, WDR, 3D DNR, HLC, BLC, digital watermarking, applicable to various monitoring scenes
- Intelligent detection: Intrusion, tripwire (support the classification and accurate detection of vehicle and human)
- Abnormality detection: Motion detection, video tampering, scene changing, audio abn PUM0004243 ormality detection, no SD card, SD card full, SD card error, network disconnection, IP conflict, illegal access, voltage detection
- Alarm: In, out; Audio: In, out; Supports max. 256 G Micro SD card
- 12V DC/POE power supply



Accessories:

FB200
wall mount bracket



Accessories:

DT-FA137
junction box



Accessories:

DT-MFA152
pole mount

MT-IPD2800AI

TECHNICAL SPECIFICATIONS

Camera	Image Sensor	1/3" Megapixel progressive CMOS			
	Max. Resolution	3840 (H) × 2160 (V)			
	ROM	128 MB			
	RAM	512 MB			
	Scanning System	Progressive			
	Electronic Shutter Speed	Auto/Manual 1/3 s–1/100000 s			
	Min. Illumination	0.005 Lux@F1.5 (Color, 30IRE) 0.0005 Lux@F1.5 (B/W, 30IRE) 0 Lux (Illuminator on)			
	S/N Ratio	> 56 dB			
	Illumination Distance	40 m (131.23 ft)			
	Illuminator On/Off Control	Auto / Manual			
	Illuminator Number	2 (IR LED)			
	Pan/Tilt/Rotation Range	Pan: 0°–355°; Tilt: 0°–75°; Rotation: 0°–355°			
	Lens	Lens Type	Motorized vari-focal		
Mount Type		φ14			
Focal Length		2.7mm~13.5mm			
Max Aperture		F1.5			
Field of View		Horizontal: 104°–27° Vertical: 55°–15° Diagonal: 124°–31°			
Iris Type		Fixed			
Close Focus Distance		0.8 m (2.6 ft)			
DORI Distance			Lens	W	T
		Detect	64m (210.0 ft)	222.0 m (728.3ft)	
		Observe	25.6m (84.0 ft)	88.8m (291.3 ft)	
	Recognize	12.8m (42.0 ft)	44.4 m (145.7 ft)		
	Identify	6.4m (21.0 ft)	22.2 m (72.8 ft)		
Professional, Intelligent	Perimeter Protection	Tripwire; intrusion (Recognition of human and vehicle)			
	Intelligent Search	Work together with Smart NVR to perform refine intelligent search, event extraction and merging to event videos			
Video	Compression	H.265; H.264; H.264H; H.264B; MJPEG (only supported by sub stream)			
	Smart Codec	Smart H.265+ / Smart H.264+			
	Video Frame Rate	Main stream (2688 × 1520@1–25/30 fps) Sub stream (704 × 576@1–25 fps/704 × 480@1–30 fps)			
		Main stream (3840 × 2160@1–20 fps)			
		3 streams			
	Stream Capability	3 streams			
	Resolution	4M (2688 × 1520); 3M (2304 × 1296); 1080p (1920 × 1080); 1.3M (1280 × 960); 720p (1280 × 720); D1 (704 × 576/704 × 480); VGA (640 × 480); CIF (352 × 288/352 × 240)			
	Bit Rate Control	CBR/VBR			
	Video Bit Rate	H.264: 3 Kbps–8192 Kbps H.265: 3 Kbps–8192 Kbps			
	Day/Night	Auto(ICR)/Color/B/W			
	BLC	yes			
	HLC	yes			
WDR	120 dB				

Video	White Balance	Auto/natural/street lamp/outdoor/manual/regional custom		
	Gain Control	Auto/Manual		
	Noise Reduction	3D DNR		
	Motion Detetion	OFF/ON (4 areas, rectangular)		
	Region of Interest (RoI)	Yes (4 areas)		
	Smart Illumination	Yes		
	Image Rotation	0°/90°/180°/270° (Support 90°/270° with 1920 × 1080 resolution and lower.)		
	Mirror	Yes		
	Privacy Masking	4 areas		
	Audio Compression	G.711a; G.711Mu; G726		
Alarm Event	No SD card; SD card full; SD card error; less service time of SD card (smart card supports); network disconnection;			
	exception; motion detection; scene changing; intensity change; tripwire; intrusion; Smart Motion			
Network	Network	RJ-45 (10/100Base-T)		
	SDK and API	Yes		
	Protocol	IPv4; IPv6; HTTP; TCP; UDP; ARP; RTP; RTSP; RTCP; RTMP; SMTP; FTP; SFTP; DHCP; DNS; DDNS; QoS; UPnP; NTP; Multicast; ICMP; IGMP; NFS; PPPoE; SNMP		
		Video encryption; firmware encryption; configuration encryption; Digest; WSSE; account lockout; security logs; IP/MAC filtering; generation and importing of X.509 certification; syslog; HTTPS; 802.1x; trusted boot; trusted execution; trusted upgrade		
	Cyber Security	ONVIF(Profile S/Profile G/Profile T); CGI; P2P; Milestone; Genetec		
	Interoperability	Yes		
	Scene Self-adaptation (SSA)	20 (Total bandwidth: 64 M)		
	Storage	FTP; SFTP; Micro SD Card (support max. 256 G); NAS		
	Browser	IE: IE8, IE9, IE11 Chrome Firefox		
	Management Software	Smart PSS, DSS, MT Mobile		
	Mobile Phone	IOS, Android		
	Certifications	CE-LVD: EN62368-1 CE-EMC: Electromagnetic Compatibility Directive 2014/30/EU FCC: 47 CFR FCC Part 15, Subpart B UL/CUL: UL60950-1 CAN/CSA C22.2 No.60950-1-07		
		Power Supply	12V DC/PoE (802.3af)	
		Power Consumption	<8.5W	
Environment	Operating Conditions	-30°C to +60°C (-22°F to +140°F)/ less than 95%		
	Storage Conditions	-40°C to +60°C (-40°F to +140°F)		
	Protection Grade	IP67; IK10		
Structure	Casing	Metal		
	Dimensions	Φ122 mm × 88.9 mm (Φ4.8" × 3.5")		
	Net Weight	492 g (1.1 lb)		
	Gross Weight	663 g (1.5 lb)		

Datasheet rev.A21.4